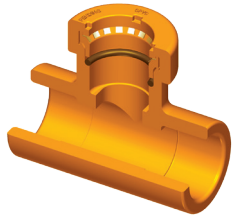




# FlameGuard<sup>®</sup> GripLoc<sup>™</sup> Fittings

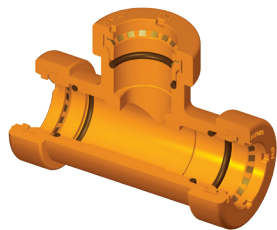
FGGL-2-1021



FlameGuard<sup>®</sup>  
Socket x GripLoc<sup>™</sup> Tee

**SPEARS<sup>®</sup>**

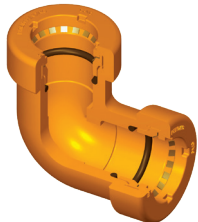
# FlameGuard<sup>®</sup> CPVC FIRE SPRINKLER PRODUCTS



FlameGuard<sup>®</sup> GripLoc<sup>™</sup>  
Tee

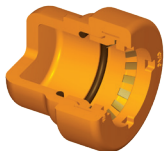
Spears<sup>®</sup> GripLoc<sup>™</sup> Fittings are engineered for maintaining building safety by getting CPVC Fire Sprinkler Systems up and running in the event of needed repair, replacement or modification!

## Solutions for Fire Sprinkler Systems... Permanent Leak-Free Connections Excellent for Quick Repairs & System Extensions Uses NO Solvent Cement - Reduces System Downtime

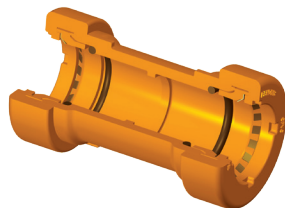


FlameGuard<sup>®</sup> GripLoc<sup>™</sup>  
Elbow

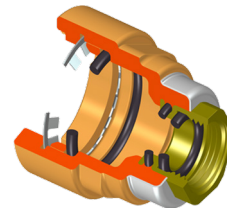
- ✓ Stainless Steel Gripper Ring Permanently Holds Pipe Joint in Place
- ✓ Internal High Grade EPDM O-ring Seals Provides Permanent, Reliable Sealing



FlameGuard<sup>®</sup> GripLoc<sup>™</sup>  
Cap



FlameGuard<sup>®</sup> GripLoc<sup>™</sup>  
Coupling



FlameGuard<sup>®</sup> GripLoc<sup>™</sup>  
TorqueSafe<sup>™</sup>  
GripLoc<sup>™</sup> x Gasket Fipt



FlameGuard<sup>®</sup> GripLoc<sup>™</sup>  
Repair Coupling



PROGRESSIVE PRODUCTS FROM SPEARS<sup>®</sup>  
INNOVATION & TECHNOLOGY



**FlameGuard® Socket x GripLoc™ CPVC Tee -**  
**LEAD FREE**  
 EPDM Gasket  
 Uses No Solvent Cement

Pressure Rating  
 175 PSI (1.21 Mpa)  
 @ 150 °F

**DO NOT INSERT FINGERS**

| Part Number | Size | G     | G1  | H | H1    | L | M     | M1     | Approx. Wt. (Lbs.) |
|-------------|------|-------|-----|---|-------|---|-------|--------|--------------------|
| GLS4201-010 | 1    | 15/16 | 7/8 | 2 | 2-1/2 | 4 | 1-7/8 | 2-5/16 | .48                |

**FlameGuard® GripLoc™ CPVC Tee -**  
**LEAD FREE**  
 EPDM Gasket  
 Uses No Solvent Cement

Pressure Rating  
 175 PSI (1.21 Mpa)  
 @ 150 °F

**DO NOT INSERT FINGERS**

| Part Number | Size | G     | H     | L | M      | Approx. Wt. (Lbs.) |
|-------------|------|-------|-------|---|--------|--------------------|
| GL4201-010  | 1    | 27/32 | 2-1/2 | 5 | 2-5/16 | .73                |

**FlameGuard® GripLoc™ CPVC Elbow -**  
**LEAD FREE**  
 EPDM Gasket  
 Uses No Solvent Cement

Pressure Rating  
 175 PSI (1.21 Mpa)  
 @ 150 °F

**DO NOT INSERT FINGERS**

| Part Number | Size | G     | H     | M      | Approx. Wt. (Lbs.) |
|-------------|------|-------|-------|--------|--------------------|
| GL4206-010  | 1    | 27/32 | 2-1/2 | 2-5/16 | .53                |

**FlameGuard® GripLoc™ CPVC Cap -**  
**LEAD FREE**  
 EPDM Gasket  
 Uses No Solvent Cement

Pressure Rating  
 175 PSI (1.21 Mpa)  
 @ 150 °F

**DO NOT INSERT FINGERS**

| Part Number | Size | M       | W       | Approx. Wt. (Lbs.) |
|-------------|------|---------|---------|--------------------|
| GL4247-007  | 3/4  | 1-15/16 | 1-11/16 | .14                |
| GL4247-010  | 1    | 2-5/16  | 2       | .20                |

**FlameGuard® GripLoc™ CPVC Couplings -**  
**LEAD FREE**  
 EPDM Gasket  
 Uses No Solvent Cement

L1 represents pipe insertion depth.

Pressure Rating  
 175 PSI (1.21 Mpa)  
 @ 150 °F

**DO NOT INSERT FINGERS**

| Part Number | Size | L      | L1      | M       | Approx. Wt. (Lbs.) |
|-------------|------|--------|---------|---------|--------------------|
| GL4229-007  | 3/4  | 4-1/16 | 1-15/16 | 1-15/16 | .27                |
| GL4229-010  | 1    | 4-3/16 | 2       | 2-5/16  | .35                |
| GL4229-020  | 2    | 4-7/16 | 2-1/8   | 3-5/8   | .92                |

**FlameGuard® GripLoc™ CPVC Repair Couplings -**  
**LEAD FREE**  
 EPDM Gasket  
 Uses No Solvent Cement

L represents pipe insertion depth.

Pressure Rating  
 175 PSI (1.21 Mpa)  
 @ 150 °F

**DO NOT INSERT FINGERS**

| Part Number | Size | L     | L1     | L2     | M       | T       | Approx. Wt. (Lbs.) |
|-------------|------|-------|--------|--------|---------|---------|--------------------|
| SG118-07CO  | 3/4  | 1-1/2 | 7-9/16 | 4-1/2  | 1-29/32 | 2-15/16 | .65                |
| SG118-10CO  | 1    | 1-1/2 | 7-7/16 | 4-7/16 | 2-5/16  | 3       | .72                |

**WARNING:  
 DO NOT INSERT  
 FINGERS**

**FlameGuard® GripLoc™ TorqueSafe™**  
**Female Sprinkler Head Adapter**  
**- Gasket Sealed Brass Thread**  
**Insert Style**  
 Socket x Gasket Fipt  
 With Elastomer Seal -  
 Use NO Thread Sealant

Pressure Rating  
 175 PSI (1.21 Mpa)  
 @ 150 °F

**DO NOT INSERT FINGERS**

| Part Number  | Size    | L      | M       | M1    | N     | Approx. Wt. (Lbs.) |
|--------------|---------|--------|---------|-------|-------|--------------------|
| GL4235-101 G | 3/4X1/2 | 2-7/16 | 1-23/32 | 1-3/8 | 15/32 | .10                |
| GL4235-130 G | 1X1/2   | 2-7/16 | 2       | 1-3/8 | 15/32 | .22                |

*Not intended to convey or dispense water for human consumption through drinking or cooking*

**WARNING:  
 DO NOT INSERT  
 FINGERS**

**ENSURE THAT PIPE AND FITTINGS ARE FREE OF DIRT AND DEBRIS PRIOR TO INSTALLATION.**



**SPEARS® MANUFACTURING COMPANY**  
 15853 Olden St, Sylmar, CA 91342 • PO Box 9203, Sylmar, CA 91392  
 (818) 364-1611 • www.spearsmfg.com

